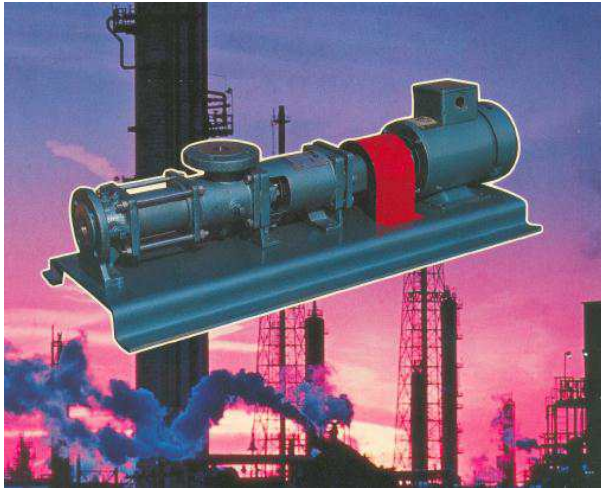


O - RANGE

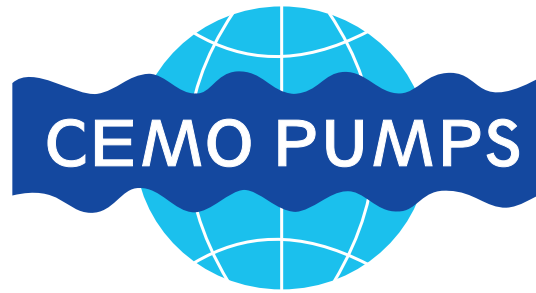


FEATURES:

- Positive displacement
- Flow capabilities 1- 100m³/hr
- Pressure range 0- 22,5 bar
- Continuous non pulsating flow
- Ability to handle hard or soft solids in suspension
- Ability to handle fibrous material
- Ability to handle extreme viscosities
- Abrasion Resistant
- Low shear characteristics
- Can be used as a proportioning or dispensing pump
- Wide choice of materials of construction
- Choice of sealing systems
- Rotors and main shafts can be reconditioned by Cemo to standard at moderate cost
- Wide throat auger feed models available

		Model						
Flow Rate (m ³ /hr)	100.0	915	9155					
	65.0	910	920					
	35.0	810	820					
	27.0	710	720	730	750			
	16.0	610	620	640				
	6.0	410	420					
	2.5	310	320					
	0.6	220						
			60m	100m	120m	180m	240m	300m
			Head					

- Agriculture** Liquid manure, also as a circulating pump, waste feed, pig fattening and rearing feedstuff, in bio-gas installations, poultry carcass waste, waste water
- Beverages** Cider, beer, concentrate, yeast, undiluted brewer's grains, wine, hot sludge, whole grapes with stalks, mashes of all kinds, concentrated red wine mash
- Breweries** Yeast, hot settings, dregs, wet crushed malt, mash, spent grains, waste yeast from filter presses, wort
- Ceramics** Porcelain slip, dead-burned fireclay, aluminium oxide, glazes, clay slip, lime, slurry, pouring compounds, iron oxide sludge, waste sulphite liquor
- Chemicals** Acids, lyes, filter cakes, centrifuge discharge, viscous pastes, sensitive plastic dispersion and emulsions, viscous adhesives
- Construction** Plastering and injection mortar, cement slurry, backfill mortar, dispersion paints, bitumen, bentonite, shell sand
- Cosmetics** Soaps, soap raw materials, ointments, creams, toothpaste, initial products, semi products, lyes, pastes
- Fish Processing** Press water, train oil, fish offal, fish waste, blood water, centrifuge sludge, fish roe, fish meal, oil, solubles, soapstock, ground fish meat
- Fruit and Vegetable Laboratories** Processing Mashses, rape, whole freshly picked damsons, fruit and vegetable mashses, carrot pulp, spinach, tomato soup
Conveying and dispensing extremely small media quantities such as acids, lyes, pastes, emulsions
- Meat Industry** Corned beef, ground meat, pieces of fat, bone meal, cooked meat, sausage meat, pork dripping, soups, meat curing liquor, sewage, animal stomach contents, waste Water
- Milk** Processing Yoghurt with or without fruit, cottage cheese, soft cheese, cream, crystallised sugar paste, milk, milk semi-products, butter, rendered cream
- Mining** Mine water of any composition, calcium carbonate paste, flotation sludges, other sludges and suspensions, lime-wash, lime slurries, waste water
- Paints and Varnishes** Printing inks, pigmented varnishes, dispersion paints, oil pastes, clear varnishes, solvents and binding agents, offset printing inks
- Paper and Pulp** Alum liquor, all sock suspensions such as paper stock and waste paper stock, ground wood up to 22% dry matter, coating mixture, dyes, sizes, limewash, waste water
- Sewage** Raw sewage, green, digested and activated sludge, dewatered sludge up to 40% dry matter, flocculating agents, filter press feeding, filter press discharge
- Shipbuilding** Bilgewater, drain water, separator sludge, sewage, heating oil of every kind, fresh water, ballast water, hydrofor tank, oil sludge
- Starch Factories** Potato pulp, frothy thin starch paste, concentrated was water sludge, sludge starch, starch paste, mashses, glucose syrup
- Sugar Refineries** Molasses, run-offs, wash water sludge, fondant mix, undiluted calcium carbonate sludge, press water with beet chips, disintegration of beet tails, massecuite
- Sweets and Confectionery** Glucose, honey, water fillings, cake mixes of all kinds, chocolate mix, marzipan, boiled sweet fillings, jams, nut paste



THE BOREHOLE PUMP

Features:

The borehole pump is of a simple in design

The positive displacement rotor and stator are immersed below draw down level in the borehole or well

The motor and drive head remain at ground level, where it is easy to inspect and service

Its high head capabilities can cope with either very deep boresholes, long distance pumping or direct irrigation from the borehole.

These pumps can be used for applications other than irrigation and household use. A typical example is mine de-watering

The pump can be mounted on an incline

Flow Rate (m ³ /hr)	80	P400S	P400		
	75	P350S	P350		
		P315			
	65	P300S	P300		
	55	P250S	P250		
	45	P200S	P200	P200H	
	30	P150S	P150		
	25	P115S	P115	P115H	
	20	P100S	P100		
	16	P75S	P75	P75H	
	12	P50S	P50	P50H	
	9	P30S	P30	P30H	
	6	P15S	P15	P15H	
	4	P10S	P10	P10H	
	1.5	P4			
		75m	150m	225m	300m
		Head			



THE HAND PUMP

Our hand pump is of extremely simple construction and easy to assemble.

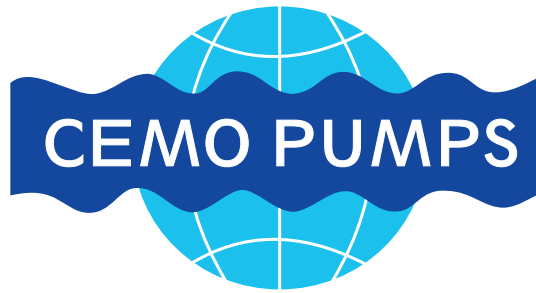
The basic system, the quality components and years of experience, guarantee long and trouble-free operation of the pump.

Because of the simple construction all maintenance and repair work can be carried out by the semi-skilled operator, and thus maintenance and repair costs are kept to a minimum.

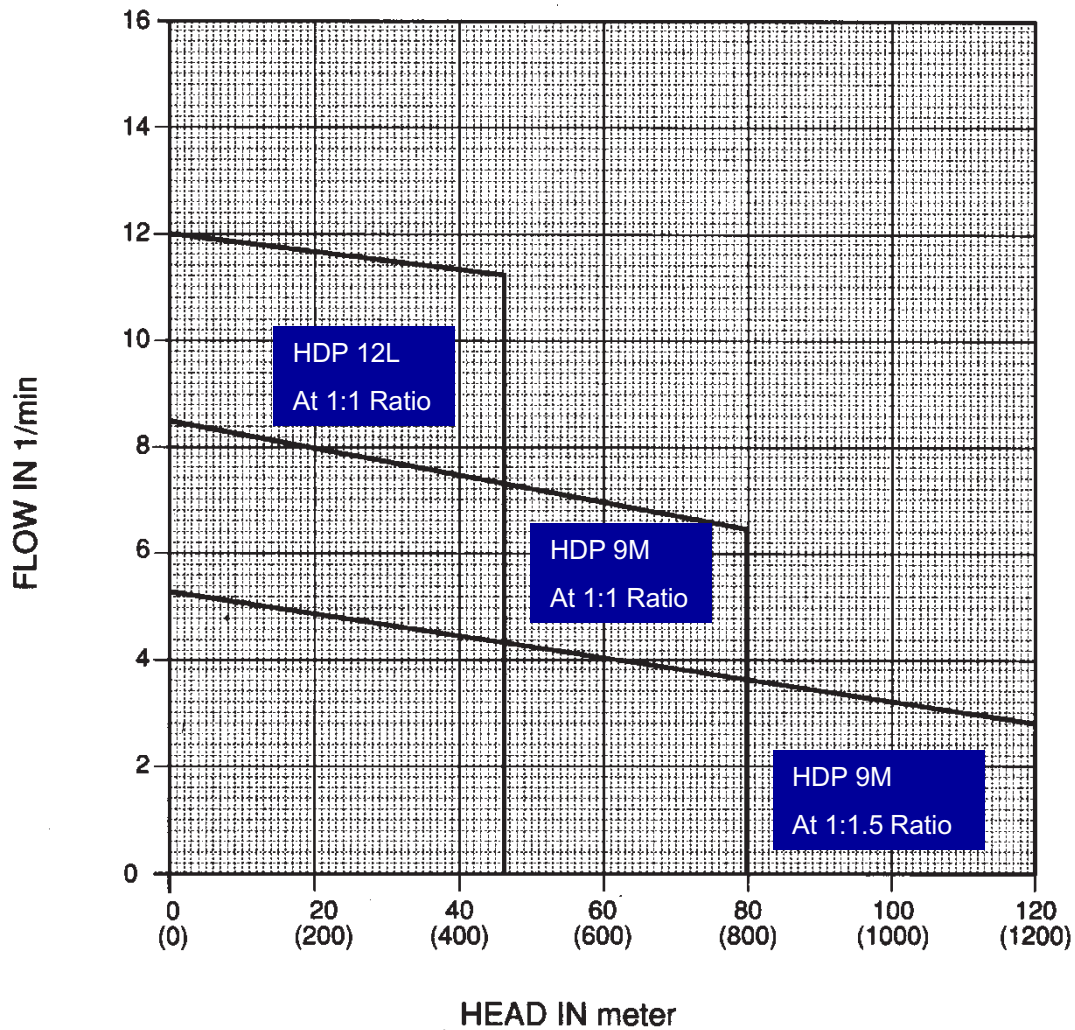
FEATURE BENEFITS

The rugged and completely closed head means:

- No possibility of unauthorized disassembly**
- Minimized danger of vandalism and theft**
- Smooth operation**
- No specific maintenance necessary**
- An anti-reverse bush prevents rotation of handle in the incorrect direction**
- Easily adjustable to alternative sources of power like diesel engine, wind, solar energy or animal drive.**



TYPICAL AVERAGE PERFORMANCE		PUMP	
MAX. HEAD	120m	SHAFT	12 Ø
MIN. STARTING TORQUE	0 Nm	COLUMN	25 Ø
Tested on water at 20°C			





The CEMO Water Transfer Horizontal Pump is designed for those applications where pumping of water is required.

This range differs from the CEMO standard Industrial range in that it is a Flex Shaft Driven Pump.

The pump is designed as a uni-directional rotation unit with discharge on the gland.

Current uses of this pump includes irrigation, domestic water supply, mine de-watering and as gland service water pumps

Vast variety of usages include: Pumping from dams, rivers and reservoirs, for irrigation or supply to gravity feed tanks or animal drinking troughs to applications as diverse as high pressure washing units or even as firefighting units

Flow Rate (m ³ /hr)	50	HP250		
	25	HP115	HP115H	
	15	HP50		HP50H
	10	HP30S	HP30	
	6	HP15S	HP15	HP15H
	4	HP10S	HP10	HP10H
	3	HP5		
		75m	150m	300m
	Head			



www.inclledon.co.za