

# ELSTER KENT Water Meterboxes

Meterboxes for Domestic Meters



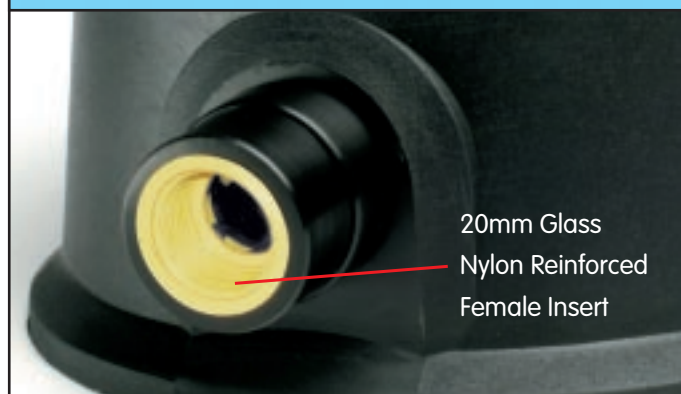
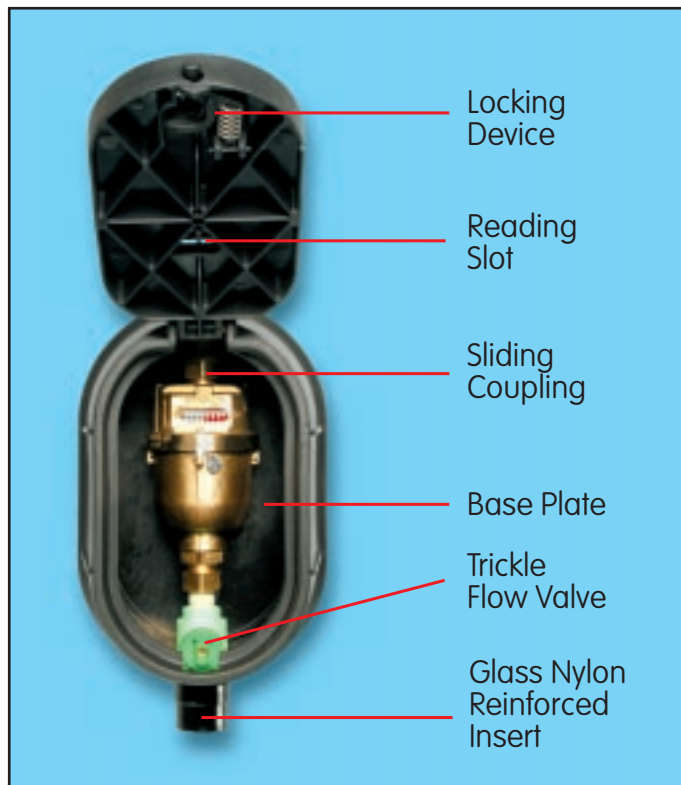
## Accuracy and long-life stem from engineering excellence

There is an Elster Kent meterbox to house 15, 20, and 25mm meters.

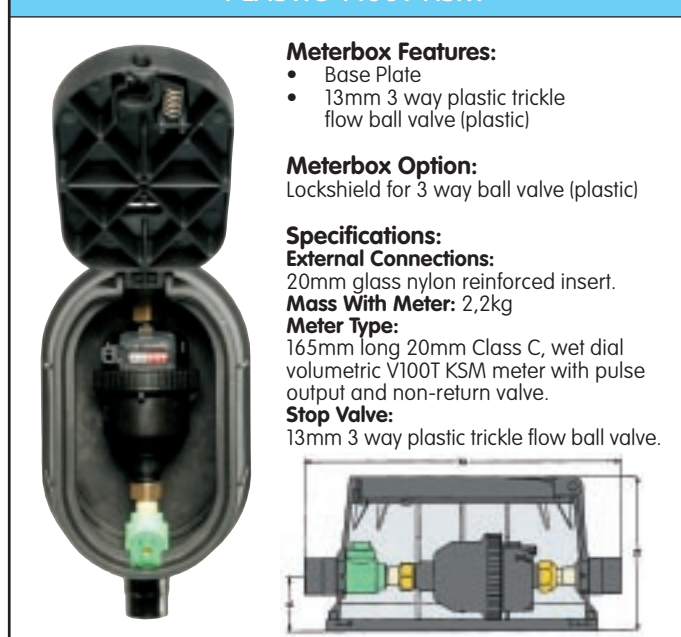
For 15mm domestic installations, there is the RDP4 meterbox for 114mm long plastic meters. For plastic or brass meters 165mm long, there is the standard meterbox.

### Features:

1. Class C meters are fitted in all sizes of meterboxes, and there is an approved pulse output on all V100T PSM and V110T KSM for upgrade to Automatic Meter Reading (AMR).
2. Patented locking mechanism, requiring a special key to open the lid.
3. Unique couplings, designed to slide back facilitating meter replacement.
4. The meter/ballcock assembly is keyed where it passes through the meterbox to prevent it from rotating during installation.
5. High quality ballcock shut off valves without rising headparts which can cause leaks.



### STANDARD PLASTIC METERBOX 165mm PLASTIC V100T KSM



**STANDARD PLASTIC METERBOX 165mm  
BRASS V100T PSM**



**Meterbox Features:**

- Base Plate
- 13mm 3 way plastic trickle flow ball cock

**Meterbox Option:**

Lockshield for 3 way ball cock

**Specifications:**

**External Connections:**

20mm nylon female reinforced thread.

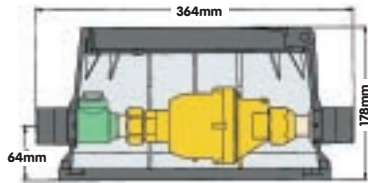
**Mass With Meter:** 3kg

**Meter Type:**

165mm long 15mm or 20mm Class C, brass volumetric, wet dial V100T PSM meter with pulse output and non-return valve.

**Stop Valve:**

13mm 3 way plastic trickle flow ball cock.



**STANDARD PLASTIC METERBOX 165mm  
PLASTIC V110T KSM**



**Meterbox Features:**

- Base Plate
- 13mm 3 way plastic trickle flow ball cock

**Meterbox Option:**

Lockshield for 3 way ball cock

**Specifications:**

**External Connections:**

20mm female thread.

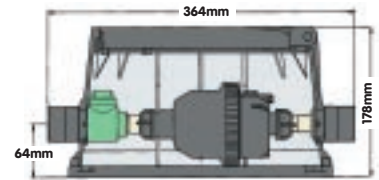
**Mass With Meter:** 2,2kg

**Meter Type:**

165mm long 15mm Class B, Plastic wet dial volumetric V110T KSM meter with pulse output and non-return valve.

**Stop Valve:**

13mm 3 way plastic trickle flow ball cock.



**STANDARD PLASTIC METERBOX 165mm  
BRASS M100 OPTIMA**



**Meterbox Features:**

- Base Plate
- 13mm 3 way plastic trickle flow ball cock

**Meterbox Option:**

Lockshield for 3 way ball cock

**Specifications:**

**External Connections:**

20mm nylon female reinforced thread

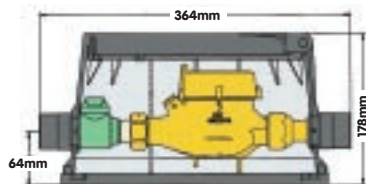
**Mass With Meter:** 3,4kg

**Meter Type:**

165mm long 15mm or 20mm Class C brass multijet wet dial M100 Optima meter.

**Stop Valve:**

13mm 3 way plastic trickle flow ball cock.



**RDP4 PLASTIC METERBOX 114mm  
PLASTIC V110T KSM**



**Meterbox Features:**

- Base Plate
- 13mm 3 way plastic trickle flow ballcock

**Meterbox Option**

- Lockshield for 3 way ball cock

**Specifications:**

**External connections:**

20mm female thread.

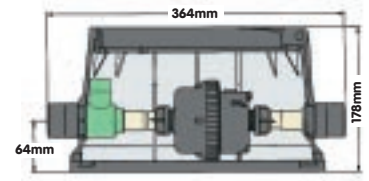
**Mass With Meter:** 2,2kg

**Meter Type:**

114mm long 15mm Class C volumetric plastic wet dial V110T KSM meter with pulse output and non-return valve.

**Stop Valve:**

13mm 3 way plastic trickle flow ball cock



**B1100 STANDARD METERBOX FOR  
25mm PLASTIC V110T KSM**



**Meterbox Features:**

- Base Plate
- 19mm external 2 way municipal ball cock fitted in a valve box.

**Specifications:**

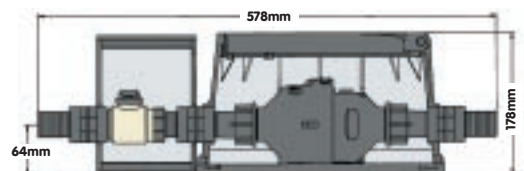
**External Fittings:** 25mm Plastic male iron threads

**Mass With Meter:** 2,8kg

**Stop Valve:** 19mm external 2 way municipal ball cock fitted in a valve box.

**Meter Type:**

198mm long 25mm Class C volumetric plastic wet dial V110T KSM meter with pulse output and non-return valve.



---

## Meterbox Specifications:

**Standard Meterbox for 25mm V110T KSM** - Meterbox to be made from a modified polypropylene compound with hinged lid containing tamperproof locking mechanism, box to contain 198mm long Class C semi-positive displacement wet dial meter, external 19mm 2 way municipal ball cock in a valve box. Connections to be 25mm plastic male iron threads. The water meter to be approved by the Department of Trade Metrology to SABS 1529-1, Class C Specifications.

---

**RDP4 Plastic Meterbox** - Meterbox and base plate to be made from a modified polypropylene compound with hinged lid containing tamperproof locking mechanism and reading slot, box to contain 114mm long 15mm Class C semi-positive displacement wet dial meter with plastic body, internal non-return valve and pulse output, sliding coupling and 3 way trickle flow ball cock that accepts lockshield facility. Connections to be 20mm female threads. The water meter to be approved by the Department of Trade Metrology to SABS 1529-1, Class C specifications.

---

**Standard Plastic Meterbox** - Meterbox to be made from a modified polypropylene compound with hinged lid containing tamperproof locking mechanism and reading slot. Box to house 3 way trickle flow plastic ballcock and sliding coupling. All internal joints to be fusion welded. Meters to be 165mm in length, Class C, 15mm or 20mm, and either of the multi-jet fanwheel type with DZR brass body or semi-positive displacement wet dial type with either plastic or DZR brass body. Connections to be 20mm reinforced female threads. Refer to Standard Meterbox section for sizes. The water meter to be approved by the Department of Trade Metrology to SABS 1529-1, Class C specifications.

---

## Warranty

All goods are tested and inspected prior to despatch. In the event of defects resulting from faulty workmanship or materials, such goods will be replaced/repaired at our discretion, free of charge at the factory, but no responsibility will be accepted for any direct or consequential damage. This warranty covers the malfunction of a correctly installed item due to a manufacturing fault, but does not cover wear and tear considered normal at the locality of installation. Brass meter warranty 5 years from date of manufacture. Plastic meter warranty 3 years from date of manufacture.

---



**elster**  
Kent Metering (Pty) Ltd  
PO Box 201 Auckland Park 2006  
www.elsterkent.co.za

**JOHANNESBURG**  
Tel: (011) 470-4900  
Fax: (011) 474-0175

**DURBAN**  
Tel: (031) 266-4915  
Fax: (031) 266-9521

**CAPE TOWN**  
Tel: (021) 511-8465/6  
Fax: (021) 511-8446

**BLOEMFONTEIN**  
Tel: (051) 430-2603  
Fax: (051) 435-1455

**PORT ELIZABETH**  
Tel: (041) 363-1943/2026  
Fax: (041) 363-2127

The company's policy is one of continuous improvement and the right is reserved to modify the specifications without notice

40011/8/2008